

Q.

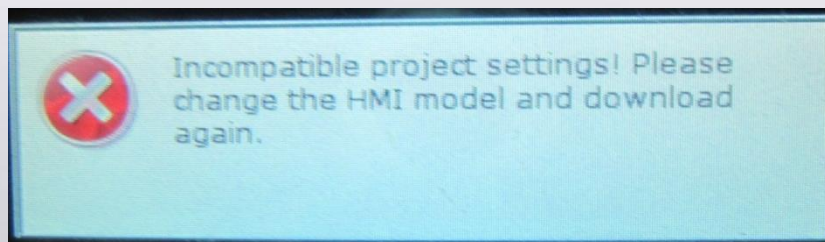
Why Can't I Edit a TK Series HMI Project?

A.

TK Series HMI is exclusive for Mainland China. To use a TK model, the PC operating environment and EasyBuilder8000 must be in Simplified Chinese.

Otherwise, the following situation can happen:

- Situation1. The TK Series model cannot be found in HMI list when creating a project.
- Situation2. After opening a TK project file, the model will be changed by the system. You can find the substitution model in System Parameter Settings » Model » HMI Model.
- Situation3. After downloading the project to HMI, the following error message is shown.



When you encounter one of the situations mentioned above, use a computer with Simplified Chinese environment, and edit the project by using Simplified Chinese EasyBuilder8000. Or, you can contact your dealer for assistance.