

How to export CSV file from RSLogix 500 software with comma sign

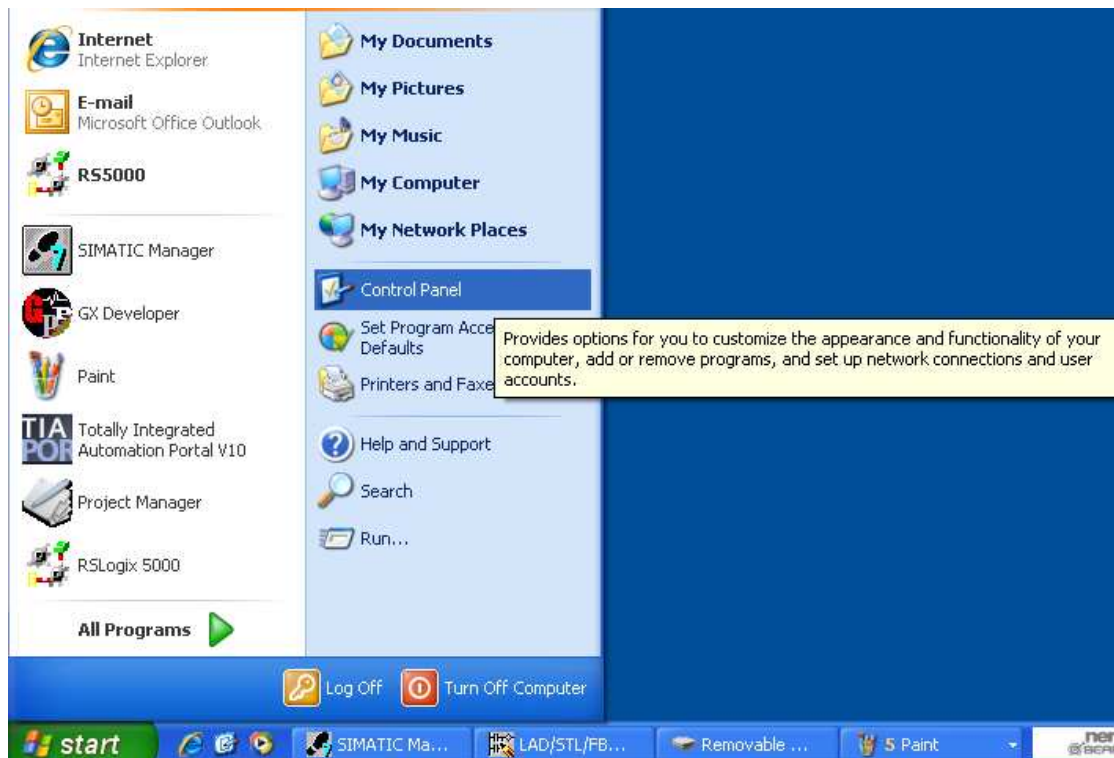
CSV is a kind of text file that uses comma sign to separate values. However, in the operating systems of some countries, semicolon is used as list separator, therefore when exporting CSV file using RSLogix500 software, semicolon is used and may cause EasyBuilder Pro to fail at identifying the file content.

Change the list separator to comma sign through the following steps then export CSV file for EasyBuilder Pro to read.

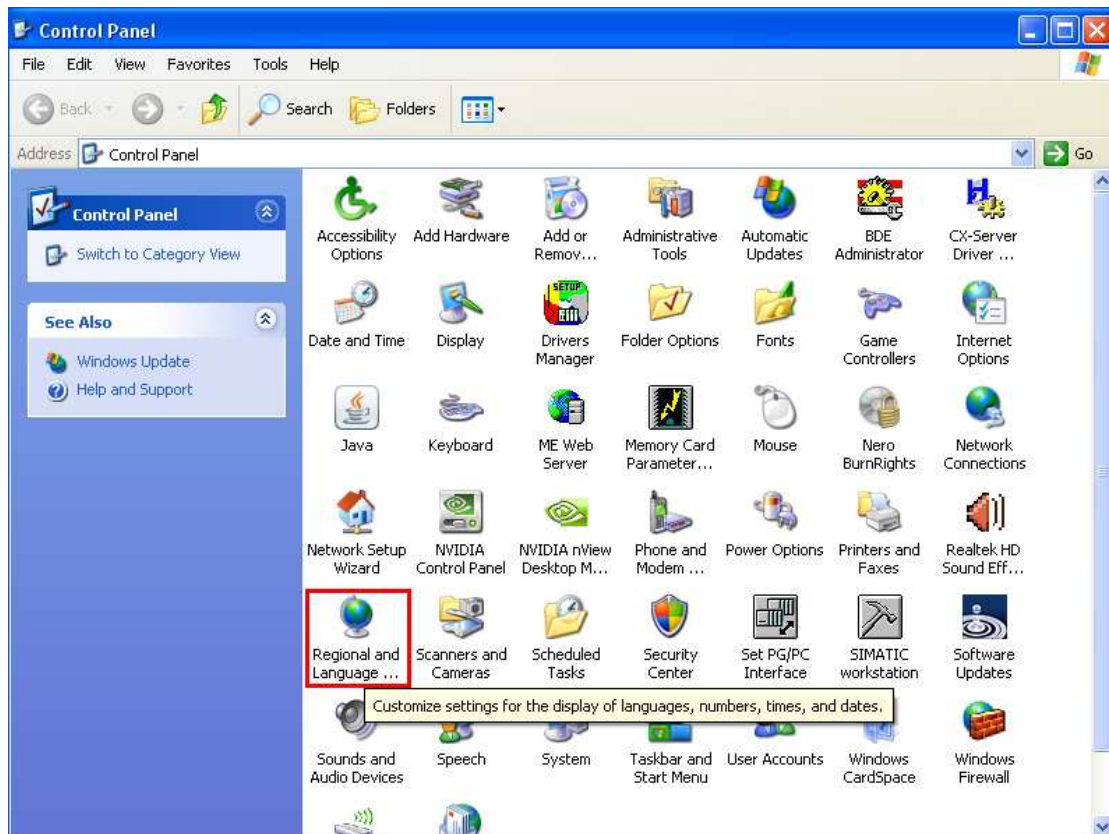
Note: The countries that run operating systems using semicolon as list separator are listed below, please complete the setting before exporting CSV file.

Czech | Netherlands | France | Germany | Greek | Italy | Spain | Poland | Sweden | Finland | Russia | Malaysia | Turkey

Select [Control Panel].



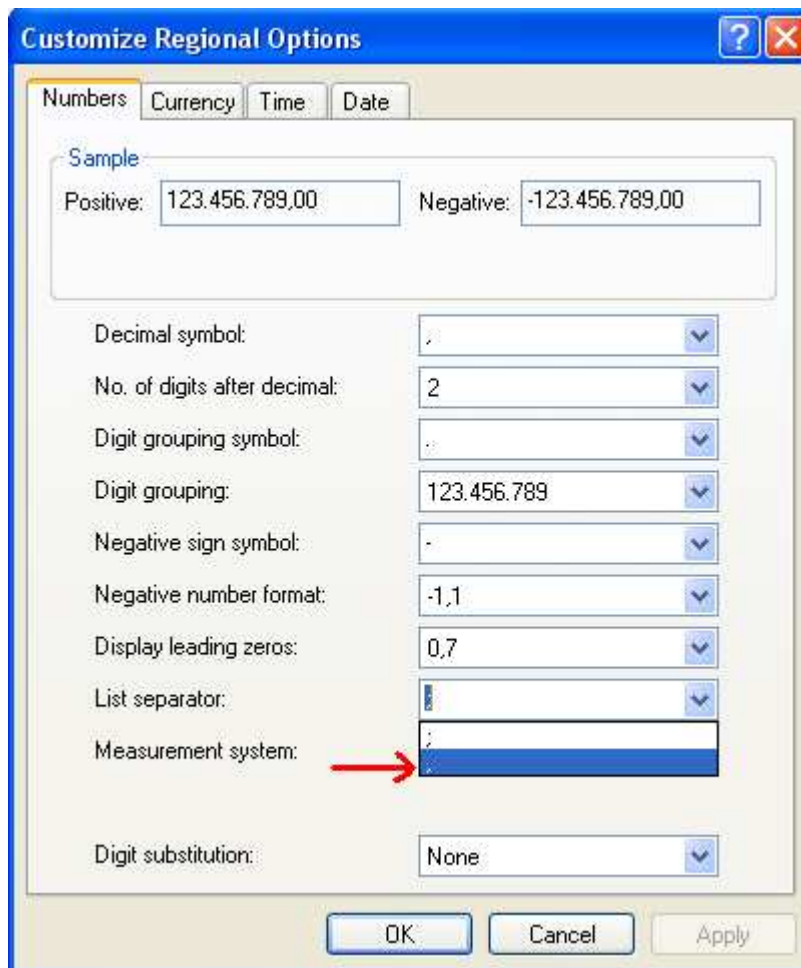
Select [Regional and Language].



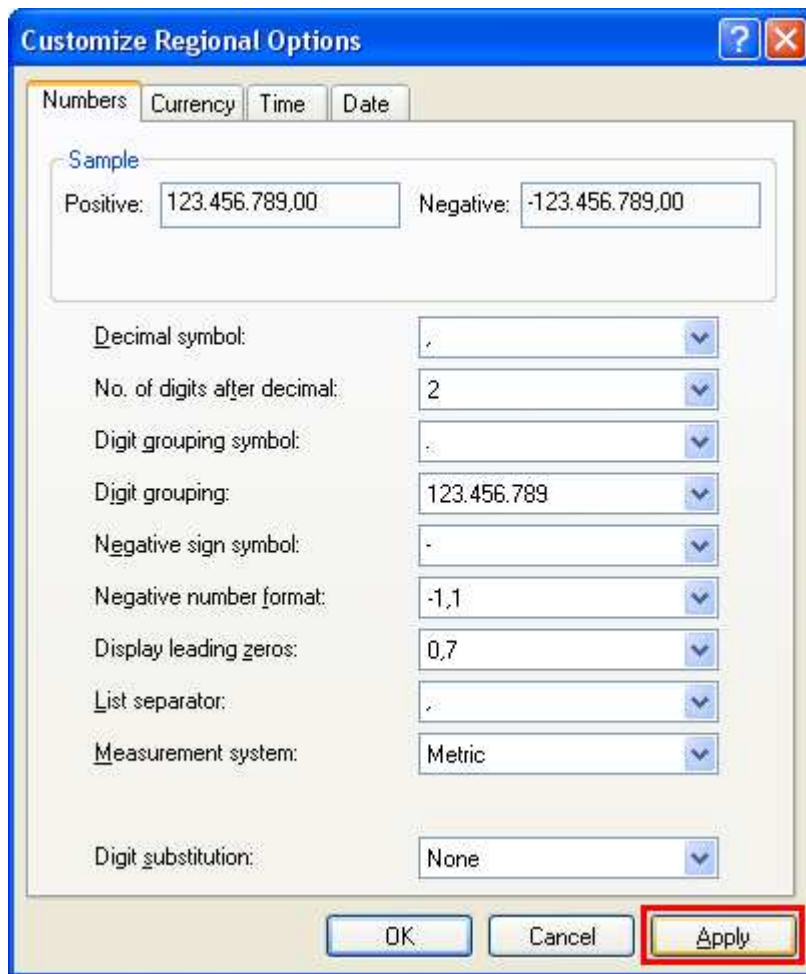
In Regional Options, select [Customize].



Select comma sign in List Separator.



Click [Apply] and [OK].



The screenshot shows the 'Customize Regional Options' dialog box with the 'Numbers' tab selected. The 'Sample' section shows 'Positive: 123.456.789,00' and 'Negative: -123.456.789,00'. The settings are as follows:

Setting	Value
Decimal symbol	,
No. of digits after decimal	2
Digit grouping symbol	.
Digit grouping	123.456.789
Negative sign symbol	-
Negative number format	-1,1
Display leading zeros	0,7
List separator	,
Measurement system	Metric
Digit substitution	None

At the bottom, the 'Apply' button is highlighted with a red box, along with 'OK' and 'Cancel' buttons.

After finishing settings above, use RSLogix 500 to export CSV file, the CSV file will use “,” as default separator.