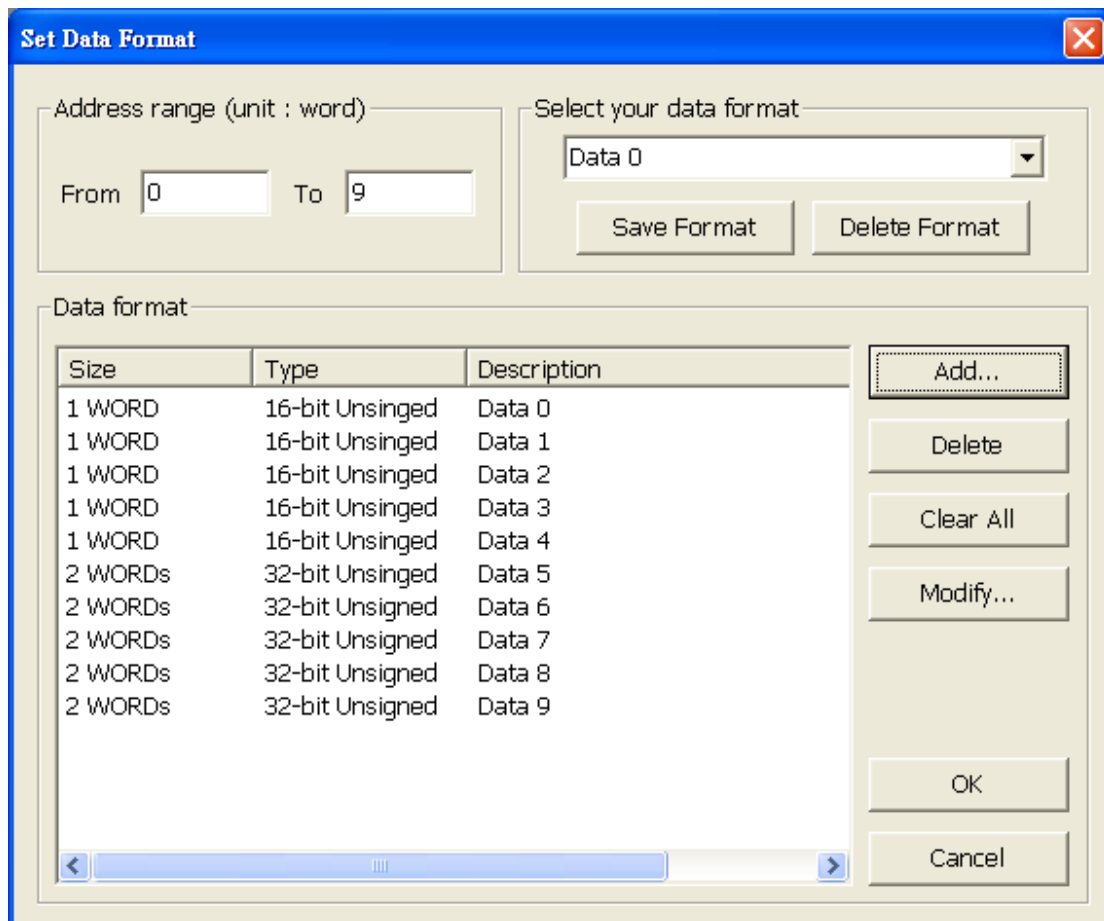


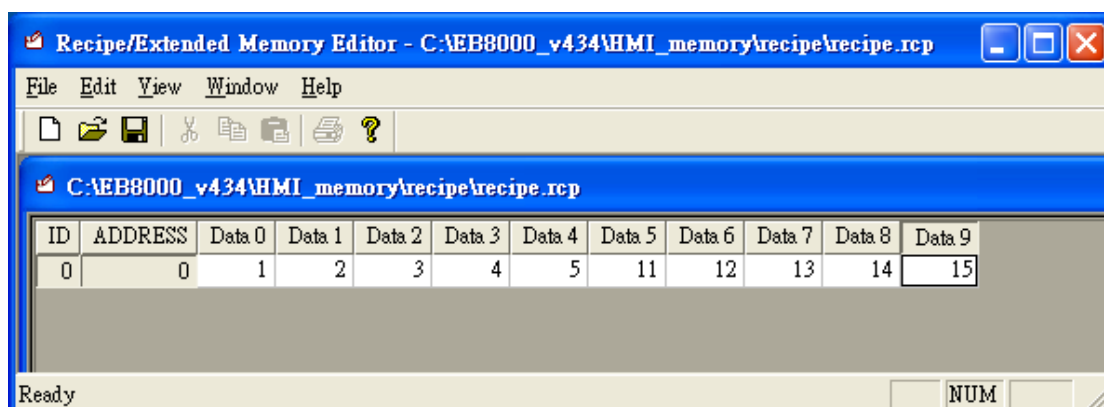
Recipe Format

➤ **Set RW0~RW4 to 16-bit unsigned, RW5~RW13 to 32-bit unsigned**

1. Set the data format in Recipe Editor.



2. The Data are shown below. Data 0~Data 4 are the contents of addresses RW0~RW4. Data5~Data9 are the contents of addresses RW5~RW13.



3. The formats seen in HEX edit are listed; low bytes first, high bytes follow.

RW0 = 01 00

RW1 = 02 00

RW2 = 03 00

RW3 = 04 00

RW4 = 05 00

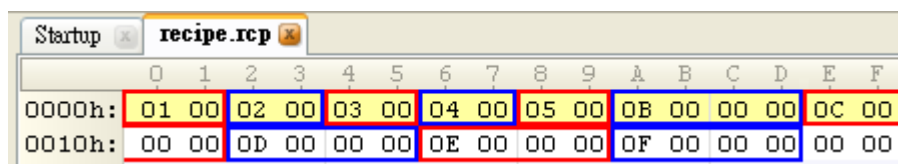
RW5 = 0B 00 00 00

RW7 = 0C 00 00 00

RW9 = 0D 00 00 00

RW11 = 0E 00 00 00

RW13 = 0F 00 00 00



Address	Hex Data
0000h	01 00 02 00 03 00 04 00 05 00 0B 00 00 00 0C 00
0010h	00 00 0D 00 00 00 0E 00 00 00 0F 00 00 00 00 00

➤ Transmitting Recipe File

1. Input ftp address and password, in this example HMI IP is 192.168.1.103, password 111111. EX: ftp://uploadhis:111111@192.168.1.103



2. Click Enter, HMI history records will be shown, the recipe folder is included.



3. Copy the newly built recipe.rcp into recipe folder to finish updating.