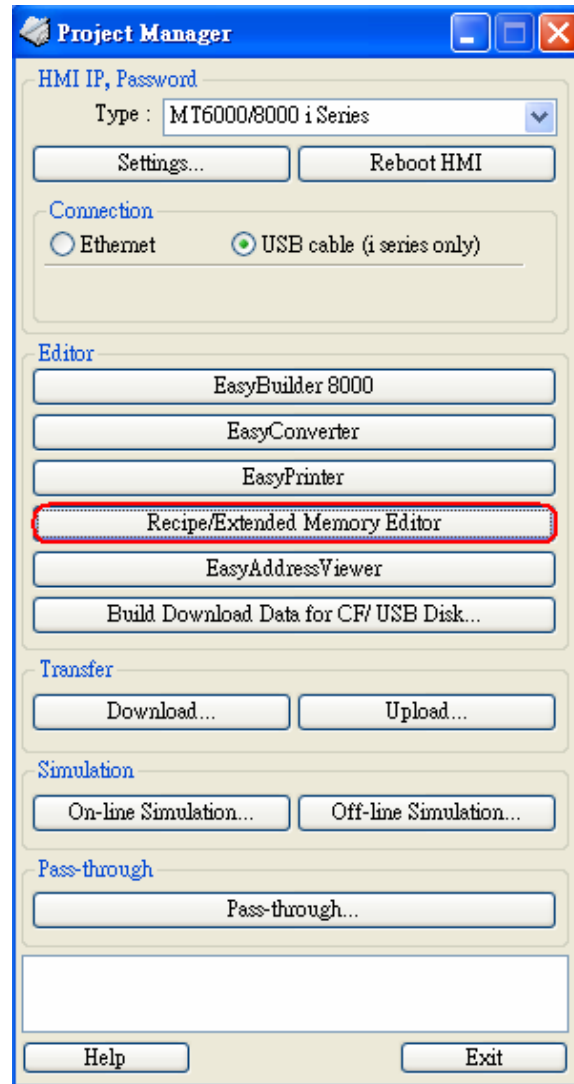
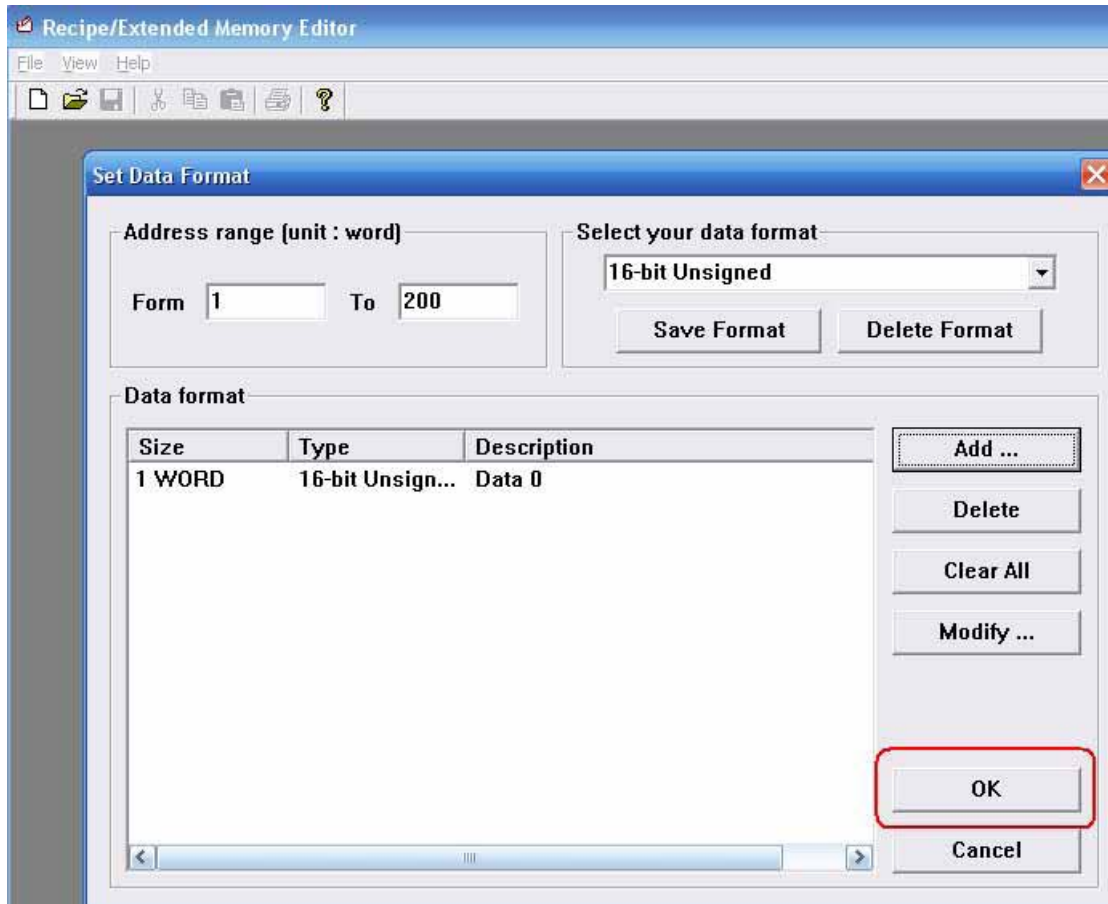


## How to translate excel file to \*.emi format

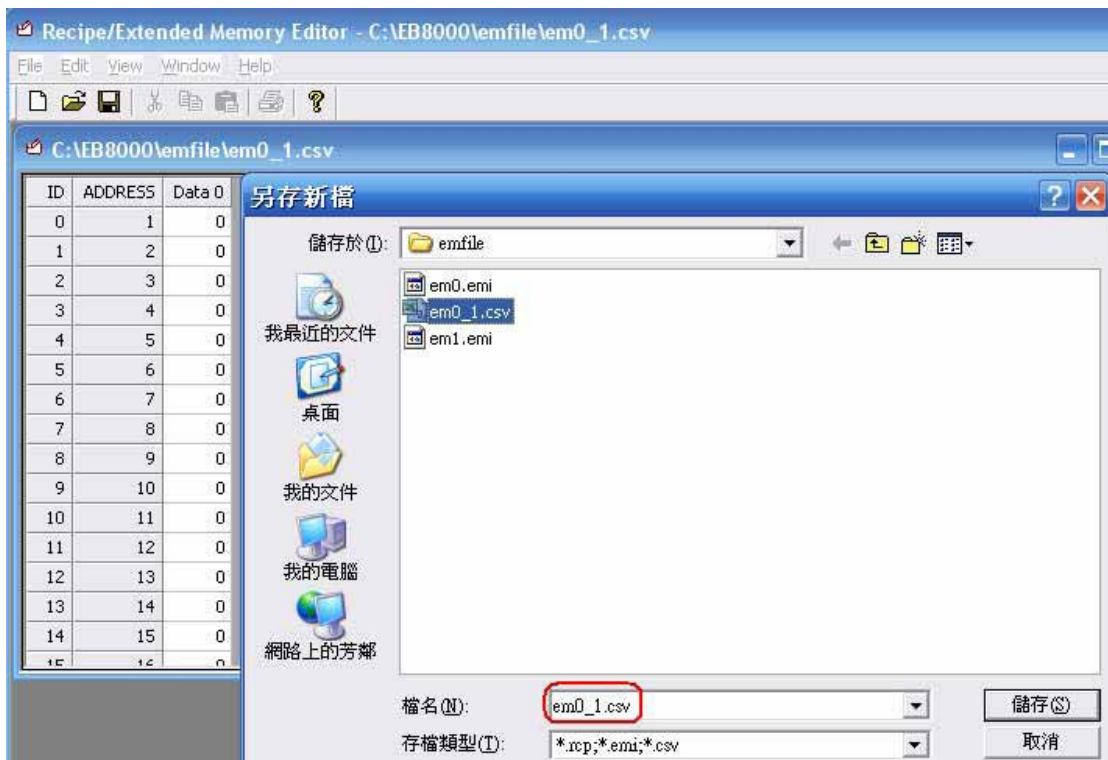
1. Open “Recipe/Extended Memory Editor”



2. Open \*.emi file and input the data, then press OK.



3. Save file as \*.csv

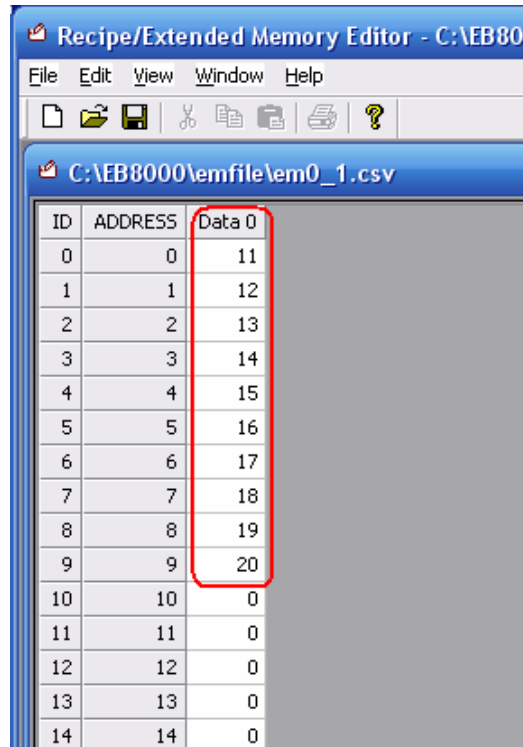


#### 4. Edit em0\_1.csv by Excel



	A	B
1	11	
2	12	
3	13	
4	14	
5	15	
6	16	
7	17	
8	18	
9	19	
10	20	
11	0	

5. After editing file by excel (em0\_1.csv), open the \*.csv by Recipe Editor, you can see the data format has already been changed.



6. Use “Save as” to save a file named em0\_1.emi.

